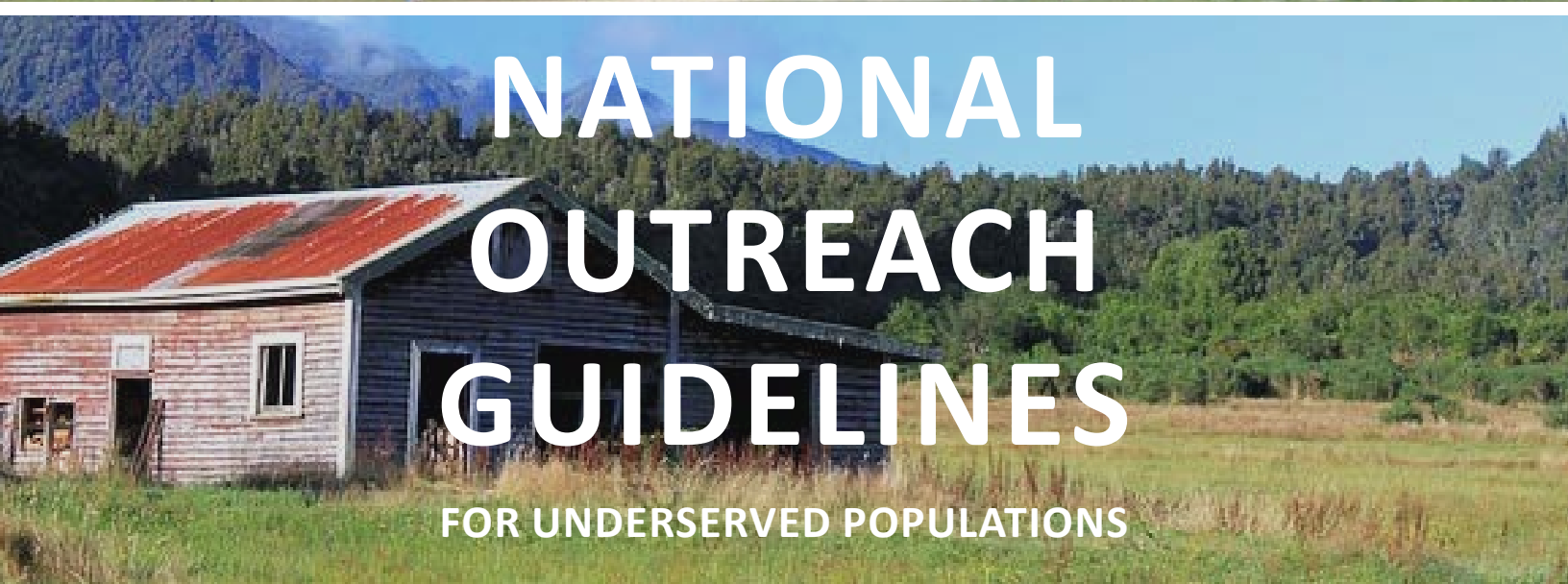




# NATIONAL OUTREACH GUIDELINES

FOR UNDERSERVED POPULATIONS





*This publication was made possible by grant number U30CS09743 from the Health Resources and Services Administration, Bureau of Primary Health Care. Its contents are solely the responsibility of the authors and do not necessarily represent the official views of HRSA.*

*Copyright © 2012, 2015 by Health Outreach Partners. All rights reserved. Copies of this and other Health Outreach Partners documents are available from Health Outreach Partners.*

# NATIONAL OUTREACH GUIDELINES FOR UNDESERVED POPULATIONS

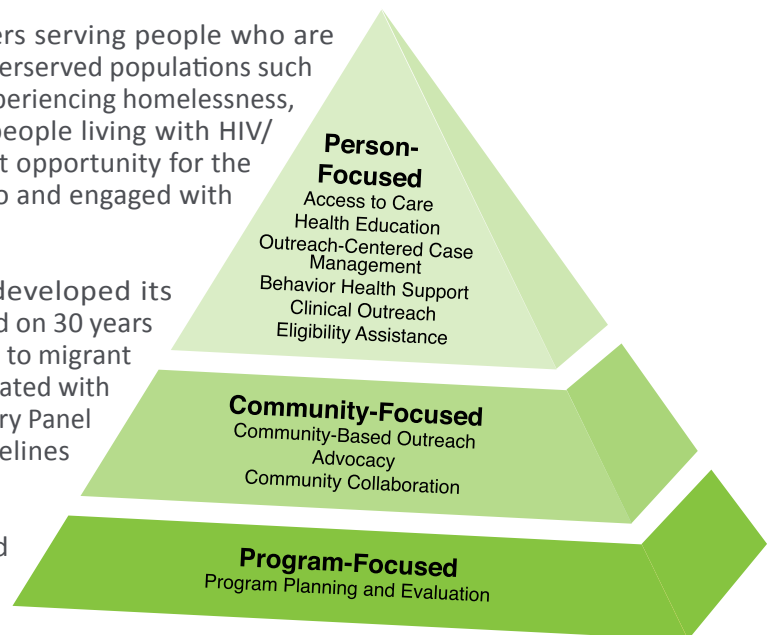
## *Executive Summary*

### Introduction

Outreach is a critical function of health centers serving people who are low-income, uninsured, and/or members of underserved populations such as migrant and seasonal farmworkers, people experiencing homelessness, racial and ethnic minorities, the elderly, and people living with HIV/AIDS. A strong outreach program offers the best opportunity for the most vulnerable populations to be connected to and engaged with true medical homes.

In 2000, Health Outreach Partners (HOP) developed its Farmworker Outreach Program Guidelines based on 30 years of experience providing direct outreach services to migrant and seasonal farmworkers. In 2012, HOP collaborated with four national partner organizations and an Advisory Panel to develop the current National Outreach Guidelines for Underserved Populations.

The ten Guidelines presented here are grouped into three broad categories: Person-Focused Guidelines, Community-Focused Guidelines, and Program-Focused Guidelines. Under each Guideline, several possible strategies for implementation are suggested. The Guidelines and accompanying strategies are intended to provide direction for how to most effectively use outreach to increase access to and utilization of comprehensive primary health care services in underserved communities.



## PERSON-FOCUSED GUIDELINES:

These guidelines focus on what Outreach Programs can do to ensure that individuals, families, and small groups found within underserved populations are fully supported in accessing and utilizing quality, culturally competent health care.

- ▶ **Access to Care:** The Outreach Program will connect underserved populations to the local health and social service delivery systems.

- ▶ **Health Education:** The Outreach Program will provide health education in outreach settings using effective teaching methods that respond to the cultural, educational, linguistic, literacy, health and educational needs of underserved populations.
- ▶ **Outreach-Centered Case Management:** The Outreach Program will conduct basic case management activities in outreach settings.
- ▶ **Behavioral Health Support:** The Outreach Program will have a key role in coordinating access to behavioral health services and providing basic mental health support for underserved populations.
- ▶ **Clinical Outreach:** The Outreach Program will coordinate and participate in clinical outreach to meet the basic health needs of underserved populations.
- ▶ **Eligibility Assistance:** The Outreach Program will assist members of underserved populations to enroll and maintain participation in health and social service safety net programs.

## COMMUNITY-FOCUSED GUIDELINES:

These guidelines focus on what Outreach Programs can do to promote healthy, supportive communities. They highlight the importance of having a visible outreach presence in the community, increasing awareness of the needs of underserved populations, advocating with and on behalf of underserved populations and building strong partnerships to strengthen services.

- ▶ **Community-Based Outreach:** The Outreach Program will establish a visible presence in the community, providing information, education, services and support where members of underserved populations live, work, spend time, and access services.
- ▶ **Advocacy:** The Outreach Program will advocate on behalf of underserved populations to ensure cultural competent, quality health care.
- ▶ **Community Collaboration:** The Outreach Program will work to build strong partnerships with and among health and social service organizations frequently accessed by underserved populations.

## PROGRAM-FOCUSED GUIDELINE:

This guideline concentrates on what Outreach Programs can do to ensure outreach efforts are efficient and effective. Outreach Programs can maximize their resources and their impact by integrating outreach efforts with the administrative and clinical priorities of the health center, conducting comprehensive planning processes, and documenting and evaluating outreach activities.

- ▶ **Program Planning and Evaluation:** The Outreach Program will consistently participate in outreach planning, document its activities and measure the outcomes of services provided.

# ACKNOWLEDGEMENTS

## National Partners

Health Outreach Partners is grateful for the close collaboration of its National Cooperative Agreement Partners. The following individuals provided invaluable input and vision to the Guidelines project. They recruited colleagues representing diverse underserved populations to serve as Advisory Panel members. They reviewed and provided thoughtful feedback into multiple drafts of the Guidelines. And they supported and continue to support the promotion of strong, sustainable outreach programs in community health organizations across the country.

▶ **Joe D. Gallegos, MBA**

Senior Vice President for Western Operations  
National Association of Community Health Centers  
[www.nachc.com](http://www.nachc.com)

▶ **Colleen Reinert, MPH**

Senior Managing Director  
Migrant Health Promotion  
[www.migranthealth.org](http://www.migranthealth.org)

▶ **June Kim, MPH**

Program Director of Technical Assistance  
Association of Asian Pacific Community Health  
Organizations  
[www.aapcho.org](http://www.aapcho.org)

▶ **Katy Valesky, MSSW**

Consumer Advocate  
National Health Care for the Homeless Council  
[www.nhchc.org](http://www.nhchc.org)

▶ **Yvette Ramirez Ammerman**

Associate Director, Western Operations  
National Association of Community Health Centers  
[www.nachc.com](http://www.nachc.com)

## Advisory Panel Members

A key feature of the National Outreach Guidelines is that they reflect the first-hand perspectives of professionals from community health centers and other organizations across the country that work tirelessly on behalf of underserved populations. The following individuals contributed their time, talents and invaluable perspectives to this project. Thanks to their contributions, the National Outreach Guidelines are grounded in true community needs and real-world service delivery opportunities and challenges. Health Outreach Partners and its national partners extend our deep appreciation to:

### **Pamela Aguilar**

National CHR PCC  
Training Coordinator  
Data Network Corporation/Indian  
Health Service  
Reston, VA

### **Leo Gaeta**

Program Director  
Columbia Basin  
Health Association  
Othello, WA

### **Sarah Noonan**

Deputy Director  
Westside Family Healthcare  
Wilmington, DE

### **David S. Buck**

President  
Healthcare for the  
Homeless-Houston  
Houston, TX

### **Randle Loeb**

Board Member  
Metro Denver Homeless Initiative  
Denver, CO

### **Jim O'Connell**

President  
Boston Health Care for the Homeless  
Program  
Boston, MA

### **Michael Byun**

Executive Director  
Asian Services In Action  
Cleveland, OH

### **Harvey Makadon**

Director  
National LGBT Health Education  
Center  
Boston, MA

### **Merina Sapolu**

Health Educator  
Kokua Kalihi Valley  
Honolulu, HI

### **Elizabeth Charles**

Enabling Services Coordinator  
Maine Migrant Health Program  
Augusta, ME

### **Michael McKee**

Clinic Operations &  
Health Services Director  
International Community Health  
Services  
Seattle, WA

### **Lynn D Sherman**

Chief Financial Officer  
Charles B. Wang Community Health  
Center  
New York, NY

### **Kamahanahokulani Farrar**

Board Member  
Waianae Coast Comprehensive  
Health Center  
Waianae, HI

### **René Meave**

Outreach Educator  
InterCare  
Bangor, MI

### **Mary Stewart**

Community Health Outreach  
Coordinator  
Health Care for the Homeless,  
Inc. Baltimore  
Baltimore, MD

### **Maria Lourdes Fernandez**

Program Coordinator/ Promotora  
Arizona Prevention Resource Center  
University of Arizona  
Tucson, AZ

### **Julie Nelson**

Associate Director of Outreach,  
Benefits, and Entitlements  
Heartland Health Outreach  
Chicago, IL

### **Astril Webb**

Director, Health &  
Family Services  
North American Management  
Alexandria, VA



HEALTHY PEOPLE. EQUITABLE COMMUNITIES.

[www.outreach-partners.org](http://www.outreach-partners.org)  
405 14th Street, Ste. 909  
Oakland, CA 94609